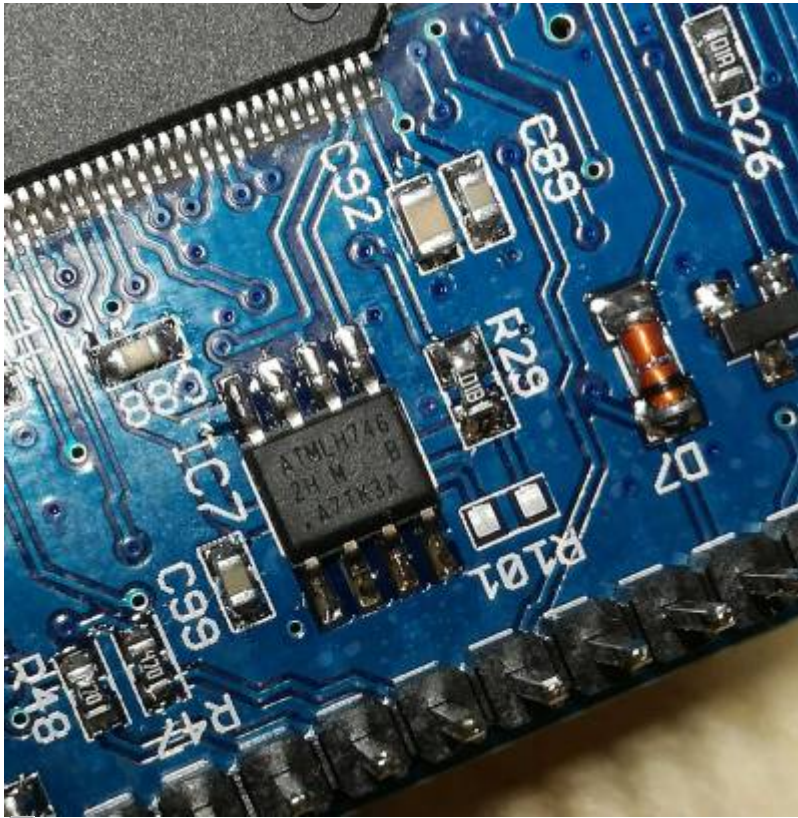


[review](#)
[english](#)

UI Board Test & Trouble Shooting

EEPROM IC7 Pin 1 orientation



EEPROM IC7 position (photo DF9EH)

This is where the dot is printed. Also the edge of the case is slanted near the 1-4 pins. See [here](#)

Potential short cut next to battery holder

Note: Also ganz wichtig: Wie auf dem Bild zu sehen unbedingt den einen Anschlußpin vor dem Einbau kürzen/abschneiden.



Potential Shortcut (photo DF9EH)

Attention: STM32 MCU Pin1 Mark

The MCU seems to have two (!) pin 1 marks. Watch text orientation on MCU to find „real“ pin 1.





Orientation of TXCO & MCU (photo DF9EH)

Missing Audio out

In case of missing audio out: just in case, please check the SW_12V connection. This is power supply connector for Audio power amplifier stage unlike the mCHF.

Typical current consumption

Typischer Stromverbrauch: mit Display 280mA und ohne Display sind es 190mA. Die 80mA waren ohne Display direkt nach der Inbetriebnahme.

In case of problems to flash the MCU

- RTC clock crystal and TXCO are prerequisite for flash programming to work
- Check correct orientation of TXCO (see photo on this page)
- Check 3.3V at C95. If not present then L3 may be defective

LEDs too bright

With the kit resistors the LEDs are quite bright. DF9EH has reduced the values as follows:

- R36 22k6 (D1 green)
- R37 6k8 (D2 red)
- R116 6k8 (D3 blue)

"WM8731 not detected"

In case you see this UHSDR error message please check +3V supply for codecs (WM8731) is ok. This +3V supply is generated on RF board.

MCU does not work, DFU connection / DfuSe not working also

First check that MCU is soldered in in correct orientation (see above „Pin 1“).

In order to boot the MCU needs:

- CPU clock (→ check TXCO clock)
- correct reset voltage over time at boot up (→ check voltage over time, check voltage levels at reset pin of MCU)

Only if thos pre-conditions are met will the MCU work with DfuSe or ST-Link/V2 and closed jumper „P6“.

Only after bootloader starts correctly will pin voltages for switches, LEDs and LCD be initialized to

some extend., e.g. „Band+“ and „Band-“ switch.

Also check:

- Does PC recognize the OVI40 UI board connected via USB cable, as USB device in device manager?
- PC USB port working? USB cable ok?
- Check all MCU pins are correctly soldered and no shortcuts exist: Use a thin knife / scalpell / tweezer, go inbetween MCU pins and try to push the pins gently sideways one by one, check if all are soldered to PCB. If not the pin moves slightly.

USB Stick does not work

Please check +8V supply from Rf-Board, JP1.

From:

<https://www.amateurfunk-sulingen.de/wiki/> - Afu - Wiki des DARC OV Sulingen I40

Permanent link:

<https://www.amateurfunk-sulingen.de/wiki/doku.php?id=en:ovi40test:uiboardtest>

Last update: **08.02.2018 20:50**

