

[stub](#)

Building the UI V1.8 Board

Unterlagen: OVI40 UI V1.7

UI V1.7 war die Beta Test Version der UI Platine. Es bestehen nur wenige Unterschiede zwischen V1.7 und V1.8 (der ausgelieferten Bausatz Platine). Die V1.7 Unterlagen sind deshalb interessant zum Vergleich und als Ergänzung.

Note: Die folgenden Unterlagen sind zwar für UI Board V1.7, können aber zum Bau der V1.8 benutzt werden:

OVI40 UI V1.7 Schaltbild: [uhsdr_ovi40_ui_v17_sheet.pdf](#)

OVI40 UI PCB bottom layer: [uhsdr_ui_ovi40_bst_bot_layer_17.pdf](#) (Bauteile Lage in pdf Acrobat Reader per Textsuche auffindbar)

OVI40 UI PCB top layer: [uhsdr_ui_ovi40_bst_top_layer_17.pdf](#) (Bauteile Lage in pdf Acrobat Reader per Textsuche auffindbar)

Unterlagen: OVI40 UI V1.8

Im Vergleich zur V1.7 UI kommt bei der UI V1.8 folgendes dazu:

- unter dem Display ein weiterer zusätzlicher Taster
- die beiden STEP Taster unterm VFO können in zwei verschiedenen Positionen eingelötet werden. Entweder klassisch leicht nach oben versetzt wie beim mcHF oder tiefer und damit in einer Flucht mit den 6 Funktionstasten.

[OVI40 UI V1.8 Schaltbild](#)

[OVI40 UI BoM](#)

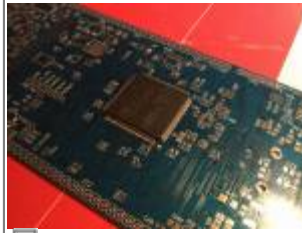
BoM von F4HTX Francois mit Bauteiletüchchen Nummern: [parts-installation_2_ui_v1.8.pdf](#)

OVI40 UI V1.8 Kit Contents

The kit contains UI V1.8 PCB, components in bags and packing list. The display is delivered as assembled and tested unit.



Components in bags (Foto: DL8EBD)



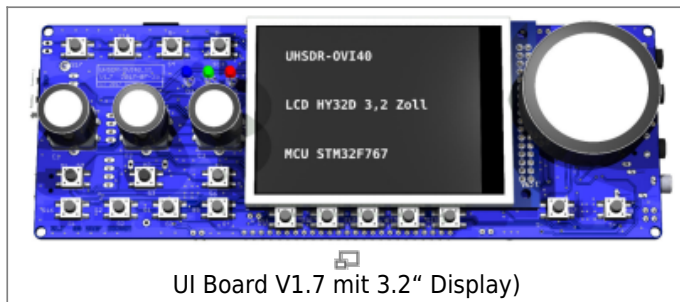
UI V1.8 PCB (Foto: DL8EBD)



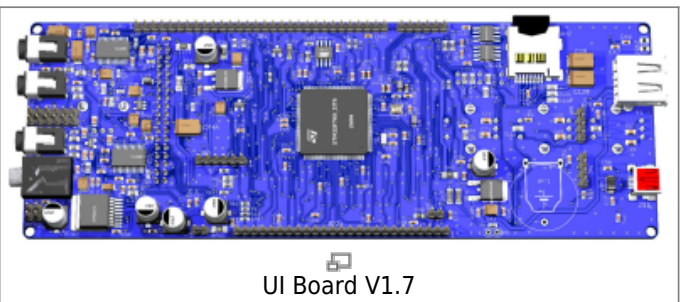
Display board, normally assembled. Here photo shows non-standard kit for self soldering (Foto: DL8EBD)

Assembly and Soldering

The graphics below - UI V1.7 with 3.2", Display - give an impression on how the finished V1.8 UI board will look like:



UI Board V1.7 mit 3.2" Display)



UI Board V1.7

Please read Errata carefully

Make sure to read the [Errata](#) carefully **before starting assembly**.

IC Device Markings

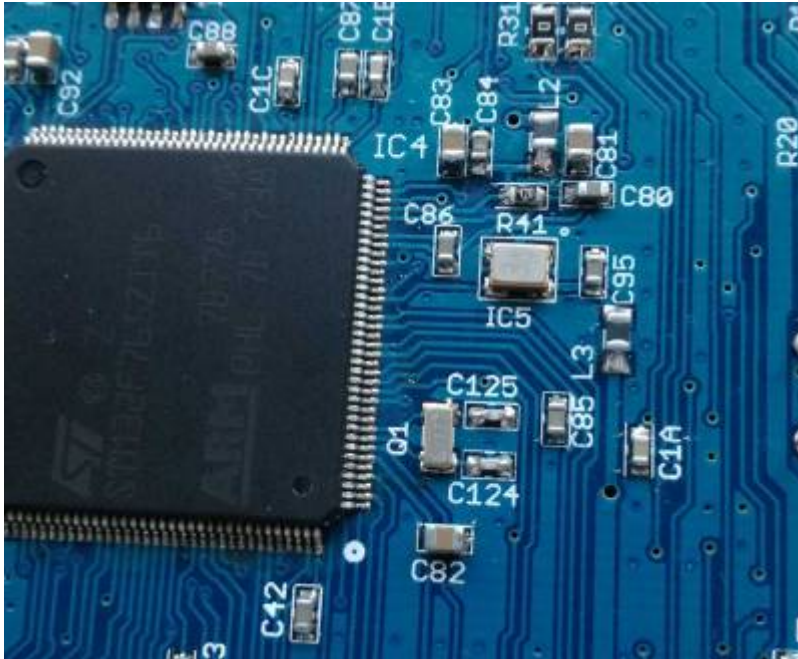
The smaller ICs can be identified by device mark. The following device marks are used:

Typ	Device Mark	Schematic	Purpose
LP5907_Q1	LLVB	IC3	LDO 3.3 V
BAV70	A4	D5, D6	Diode
BC857B	3F	T3	Transistor
BAS85	Ring = Cathode	D7 - D9	Diode

MCU STM32 "Pin 1" marking

Please understand the correct orientation of STM32 MCU Pin 1. There are two markings on the IC. Please not the text printed on MCU to find the correct Pin 1: When reading the text Pin 1 is on bottom

left corner.



Orientation of TXCO & MCU (photo DF9EH)

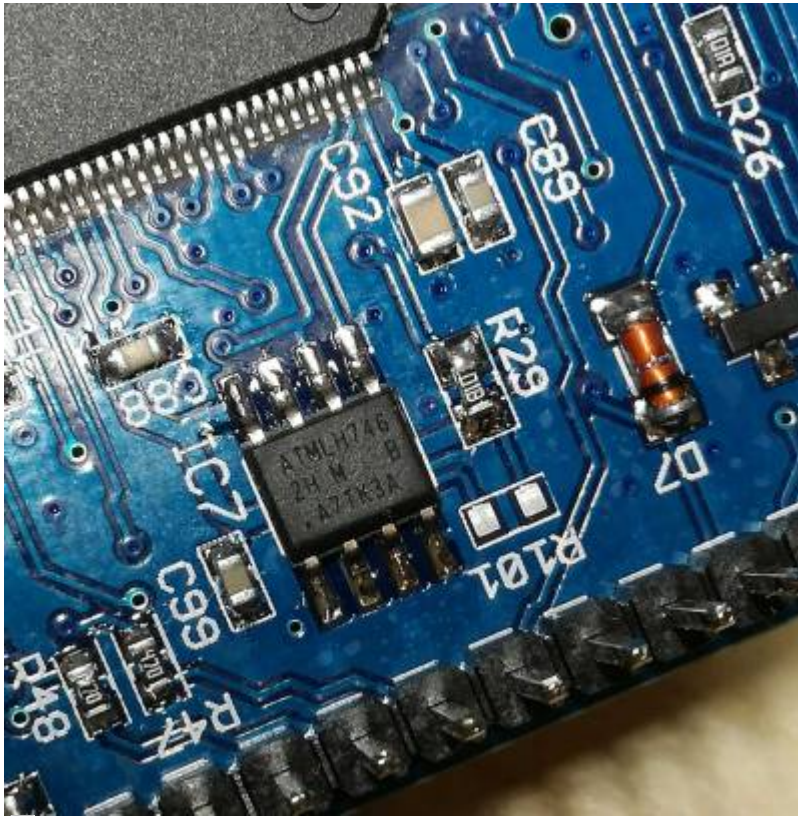
STM32F76X_ZIT vs. STM32H743ZIT6

The kit is shipped with STM32F76X_ZIT („F7“). The just released STM32H743ZIT6 („H7“) may be used instead. It is suggested to use the F7 for now. Reason: it is planned to support the H7 in the UHSDR, but no boot loader oder firmware is released for the H7 at the moment.

Comparison of MCUs:

	mcHF:	OVI40:	OVI40 - future:
	STM32F407VET6	STM32F767ZIT6	STM32H743ZIT6
Flash[kB]	500	2048	2048
RAM [kB]	192	512	1024
Clock[MHz]	168	216	400
FPU	single	double	double
Pins	100	144	144
DMIPS	210	462	856

EEPROM IC7 orientation



EEPROM IC7 position (photo DF9EH)

This is where the dot is printed. Also the edge of the case is slanted near the 1-4 pins. See [here](#)

Prevent short cut with back up battery holder

One of the connection pins of the battery holder might touch ground connection of a rotary encoder. Make sure to cut this pin flush with PCB surface **before soldering** - see photo:



Potential Shortcut (photo DF9EH)

Polarised capacitors

Please observe mounting orientation of tantalum and electrolytic capacitors. Markings on the capacitors are explained http://elektroniktutor.de/bauteilkunde/c_smdcod.html here

Mounting locations of switches S7 and S8

Two different mounting locations are provided on the UI PCB for S7 and S8:

- „mCHF style“: S7 and S8 not line with switches under LCD - they are mounted slightly higher
- „OVI40 style“: S7 and S8 are mounted in line with the function keys under the LCD

„In line“ is the preferred mounting location for S7 and S8.

Modifications

Temporary Modification: Resistor in parallel to C94

Symptom: In stand-by the current drawn from back-up battery is excessively high. Work-around: Put resistor in parallel to C94. Start with a value of 56k - this seems to work in most cases. If board does not start increase value slightly.

Change brightness of LEDs

Helle LEDs: Mit den Bausatz-Vorwiderständen leuchten die LEDs sehr hell. DF9EH hat die Werte reduziert:

- R36 auf 22,6k (D1 grün)
- R37 auf 6,8k (D2 rot)
- R116 auf 6,8k (D3 blau)

From: <https://www.amateurfunk-sulingen.de/wiki/> - Afu - Wiki des DARC OV Sulingen I40

Permanent link: <https://www.amateurfunk-sulingen.de/wiki/doku.php?id=en:ovi40build:uiboardbuild&rev=1516868254>

Last update: **25.01.2018 08:17**

