

english
publish

Display Board Building

3.5" is the OVI40-SDR standard default display

The 3.5 inch LCD panel has exactly the same outer dimensions as the PCB porting plate of the previous 3.2 inch display. The key switches S7 and S8 on the UI board need to be mounted in the „lower“ positions (i.e. in line with the function keys below LCD), in order not to be in the way.

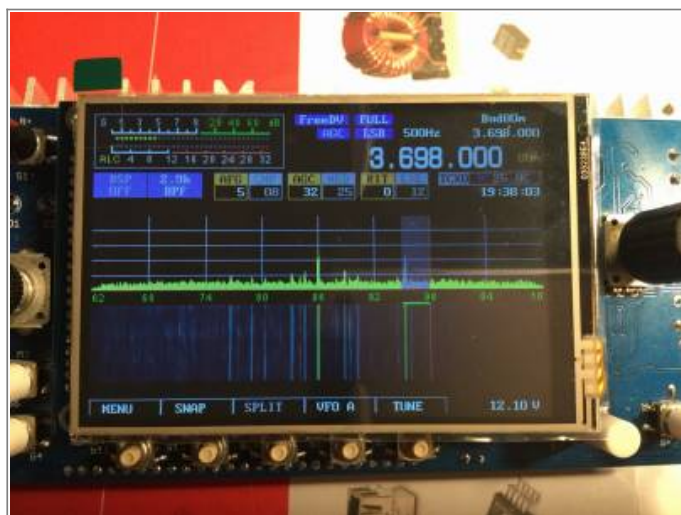
Display Board

The display board plugs into UI board vonnector directly. The display board contains LCD display and touch panel functionality. For mechanical mounting oDie Displayplatine beinhaltet Display und Touchpanel. For mechanical mounting considerations please see below.

The following LCDs can be used with UI board V1.8 and UHSDR:

- 3.5,, display 480x320 with controller ILI9846 (ot ILI9846 compatible controller): OVI40 default display
- 3.2" display 320 x 240 witch controller IL9325 (or IL9325 compatible controller): this was the display used during UI V1.8 beta testing
- 2.8,, display 320 x 240 with controller IL9325 (or compatible controller): this is the mcHF defult display

|< 95% 50% 50% >|



OVI40 3.5" display (photo DL8EBD)



OVI40 3.5,, display, component side (photo:DL8EBD)

Display Calibration - mandatory at first bring-up

Important: It is mandatory to do a display calibration at first bring-up / switch on of the touch screen

display. Only after calibration will the touch screen work with UHSDR.

. The calibration is required initially. No later calibration needed during operation.

Start the calibration by touching the touch screen with a finger **before** switching on the UI board V1.8. Keep touching the touch screen until the service menu is displayed. Now release the finger from the touch screen and follow instructions on the screen carefully. After calibration is finished please save the calibration by long-pressing the „menu“ button switch on the UI board, then long-press „power“ button.

Mechanical fixing of the display board onto the UI board

The display board will be mechanically held in position by the casing. As long as the casing is not available yet, a temporary solution is required.

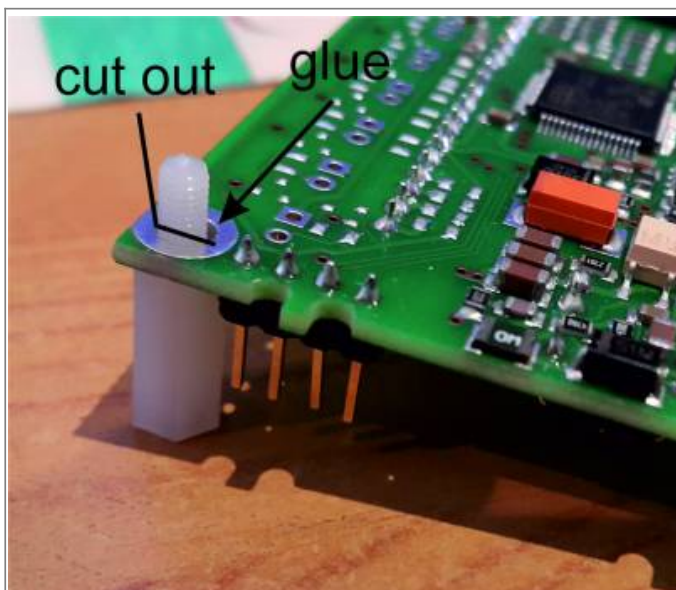
Simple approach: a piece of non-conductive material (e.g. plastic) of suitable height can be fixed between UI board and LCD PCB with double-sided self-adhesive tape. This will keep the display board stabilized and away from the UI board.

Just make sure that it is still possible to easy unplugging of the display board is still possible, when needed.

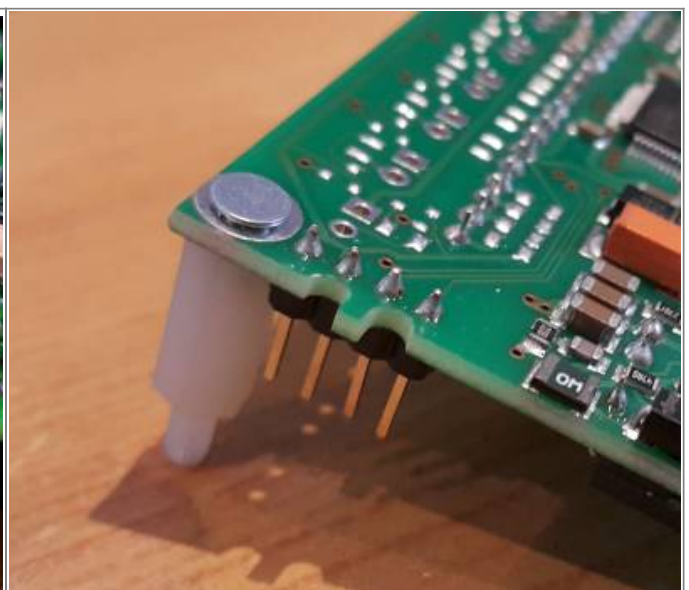
Alternatively plastic spacer bolts may be used:

Option 1 plastic spacer Plastik-Abstandshalter with inner thread and outer thread, e.g. <https://www.tme.eu/pl/details/tp-11/tuleje-dystansowe-plastikowe/fixfasten/>. Please refer to photo below: the outer thread is cut flush with the display PCB board, then glued. The spacer bolt is fixed onto the UI board with adhesive tape.

Option 2 plastic spacer bolt with two inner threads, e.g. <https://www.tme.eu/pl/details/hp-10/tuleje-dystansowe-plastikowe/fixfasten/>. This spacer bolt is fixed with display PCB by screw and fixed to UI PCB by adhesive tape.



Option 1 - Spacer glued (photo SP9BSL)



Option 2 - TEM screw (Photo SP9BSL)

Display Brightness

The LCD display brightness can be adjusted by changing R105 (15 Ohm default) to a different value. R105 is next to the SOIC8-IC

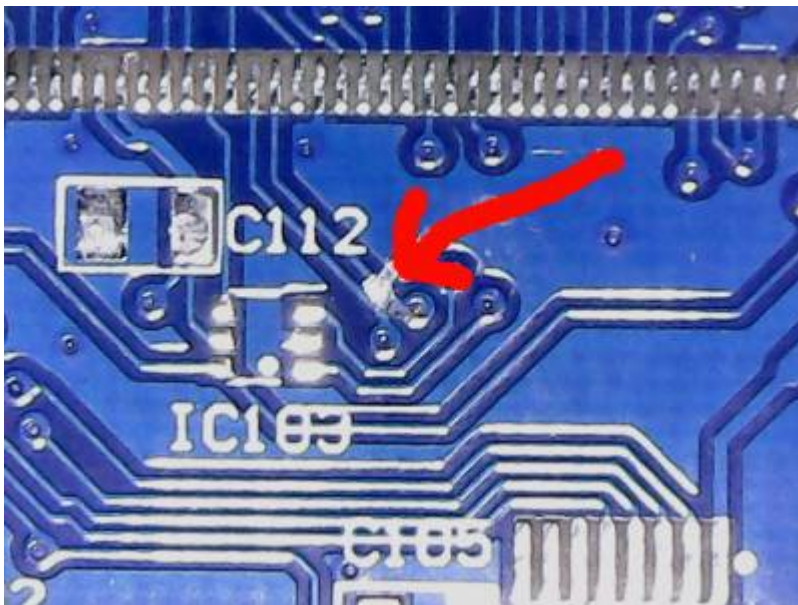
According to LCD data sheet the maximum DC current allowed is 60 mA continuous, or 75 mA for less than a minute. When changing R105 please make sure not to exceed 60 mA.

Reducing R105 to 10 Ohm typically allows to increase brightness (if needed) while staying within specifications.

Cutting SDO line

Note: It is necessary to cut the SDO line for all LCD display boards delivered before January 5, 2018. Displays delivered later have this modification already.

Please cut the PCB trace as shown in photo. This is the SPI SDO „data output“ line from display. This line does not go tri-state in tri-state mode. It needs to be cut so that the touch screen controller ADS8743 / TSC2046 can not be detected by UI board MCU Display.



This line on display board needs to be cut (photo DF80E)

Display Assembly

Note: The display board is delivered as an assembled and tested unit. Explanations below refer to self-assembly, not required, and are added for completeness and reference only

This pdf contains the modified assembly notes: [lcd_35_40pin_df80e_sp9bsl.pdf](#)

- C103 not needed anymore
- R101 = R104 = 100K
- R106 = 1K
- R102 = 15R
- all 10u now replaced by 1u
- XPT2046 = ADS7843E

DF80E suggest to replace the two parallel tantal capacitors next to the 3.3V voltage regulator by 100nF & 1uF. He also suggest to put 100nF & 1uF in the free location shown in Andy's photo.

The two pads of R107 location need to be short cut, otherwise the LCD won't work.

Only LCD **parallel mode** is supported at this time.

Positioning the LCD on the PCB

The lower left corner of the LCD should be flush with the PCB.

Dazu die LCD links unten ansetzen und sie bei bereits eingestecktem Flachkabel vorsichtig in Richtung PCB umklappen. Irgendwann geht es schwerer - weil das Flachkabel jetzt zwischen LCD und PCB Wellen schlägt. Nun auf der Seite der PCB mit dem FPC mit einem Schraubendreher zwischen Flachkabel und PCB gehen und vorsichtig eine kleine Schlaufe rausziehen. Das LCD klappt nun wie von selbst gegen die PCB und kann vorsichtig (!!) am linken, oberen und unteren Rand angedrückt werden.

Das Doppelklebeband links in voller Höhe (überdeckt die 20pol Löcher) in ca. 1cm Breite positionieren, und dann oben und unten in ca. 5mm Breite über die volle PCB Länge. Rechts kommt KEIN Klebeband hin. Es ist zu vermeiden rechts mit Kraft auf das LCD zu drücken. Dort ist es sehr empfindlich, weil dort kein Plastik-Rand darunter ist.

From: <https://www.amateurfunk-sulingen.de/wiki/> - Afu - Wiki des DARC OV Sulingen I40

Permanent link: <https://www.amateurfunk-sulingen.de/wiki/doku.php?id=en:ovi40build:displaybuild&rev=1518962331>

Last update: 18.02.2018 13:58

